

University of the South Trail Map

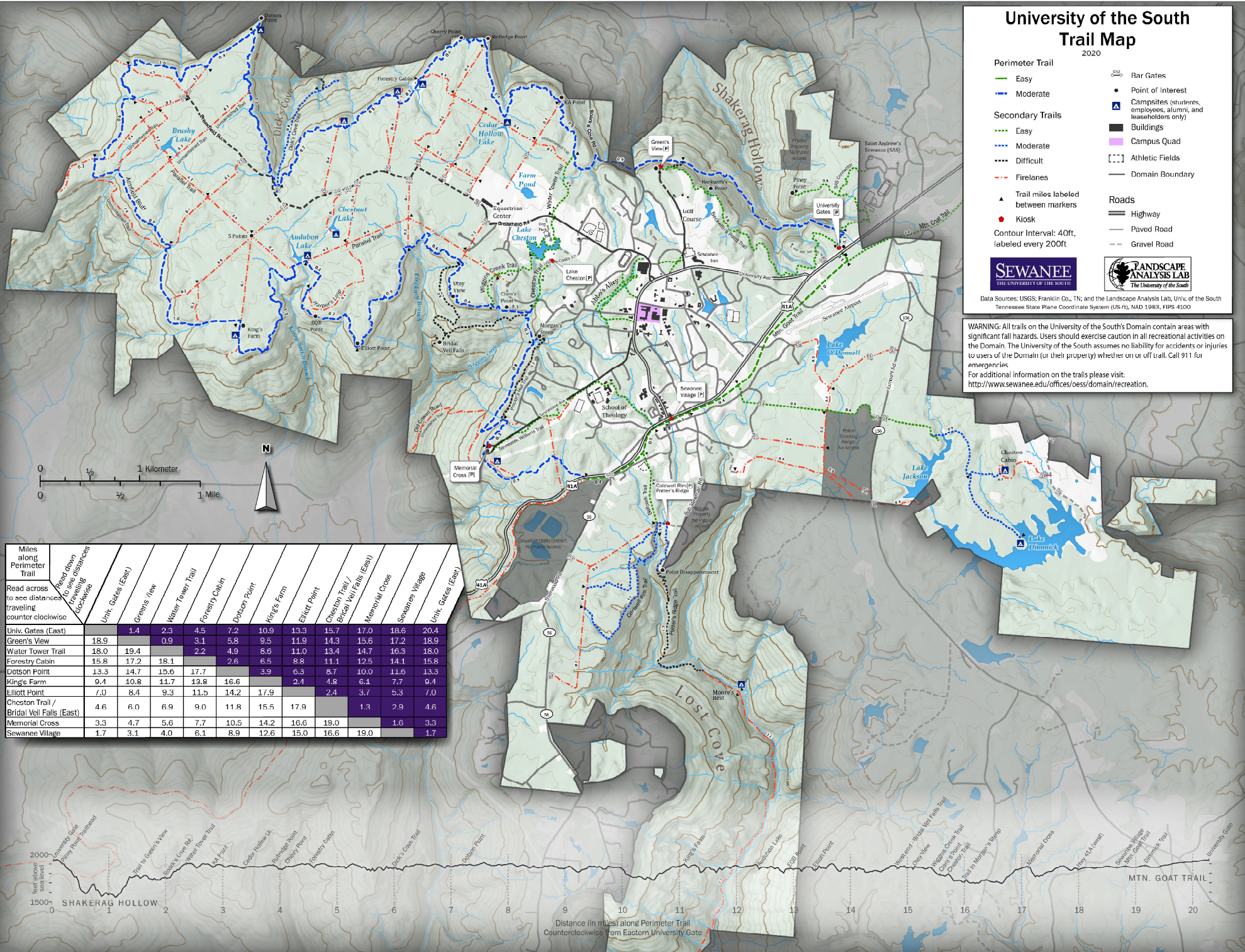
2020

- Perimeter Trail**
 - Easy
 - Moderate
- Secondary Trails**
 - Easy
 - Moderate
 - Difficult
 - Firelanes
- ▲ Trail miles labeled between markers
- Kiosk
- ◻ Bar Gates
- Point of Interest
- ▲ Campsites (students, employees, alumni, and leaseholders only)
- Buildings
- Campus Quad
- Athletic Fields
- Domain Boundary
- Roads**
 - Highway
 - Paved Road
 - Gravel Road



Data Sources: USGS; Franklin Co., TN; and the Landscape Analysis Lab, Univ. of the South
Tennessee State Plane Coordinate System (US-F), NAD 1983, FIPS 4100

WARNING: All trails on the University of the South's Domain contain areas with significant fall hazards. Users should exercise caution in all recreational activities on the Domain. The University of the South assumes no liability for accidents or injuries to users of the Domain (at their property) whether on or off trail. Call 911 for emergencies.
For additional information on the trails please visit:
<http://www.sewanee.edu/offices/oess/domain/recreation>.



| Miles along Perimeter Trail | Read across to see distances traveling counter clockwise | Head down to see distances traveling clockwise | Unit Gates (East) | Greens View | Water Tower Trail | Forestry Cabin | Dobson Point | King's Farm | Elliott Point | Cheston Trail / Bridal Veil Falls (East) | Memorial Cross | Sewanee Village | Unit Gates (East) |
|--|--|--|-------------------|-------------|-------------------|----------------|--------------|-------------|---------------|--|----------------|-----------------|-------------------|
| Unit Gates (East) | | | 1.4 | 2.3 | 4.5 | 7.2 | 10.9 | 13.3 | 15.7 | 17.0 | 18.6 | 20.4 | |
| Green's View | 18.9 | | 0.9 | 3.1 | 5.8 | 9.5 | 11.9 | 14.3 | 15.6 | 17.2 | 18.9 | | |
| Water Tower Trail | 18.0 | 19.4 | | 2.2 | 4.9 | 8.6 | 11.0 | 13.4 | 14.7 | 16.3 | 18.0 | | |
| Forestry Cabin | 15.8 | 17.2 | 18.1 | | 2.6 | 6.5 | 8.8 | 11.1 | 12.5 | 14.1 | 15.8 | | |
| Doison Point | 13.3 | 14.7 | 15.6 | 17.7 | | 3.9 | 6.3 | 8.7 | 10.0 | 11.6 | 13.3 | | |
| King's Farm | 9.4 | 10.8 | 11.7 | 13.8 | 16.6 | | 2.1 | 4.8 | 6.1 | 7.7 | 9.4 | | |
| Elliott Point | 7.0 | 8.4 | 9.3 | 11.5 | 14.2 | 17.9 | | 2.4 | 3.7 | 5.3 | 7.0 | | |
| Cheston Trail / Bridal Veil Falls (East) | 4.6 | 6.0 | 6.9 | 9.0 | 11.8 | 15.5 | 17.9 | | 1.3 | 2.9 | 4.6 | | |
| Memorial Cross | 3.3 | 4.7 | 5.6 | 7.7 | 10.5 | 14.2 | 16.6 | 19.0 | | 1.6 | 3.3 | | |
| Sewanee Village | 1.7 | 3.1 | 4.0 | 6.1 | 8.9 | 12.6 | 15.0 | 16.6 | 19.0 | | 1.7 | | |

Distance (in miles) along Perimeter Trail
Counterclockwise from Eastern University Gate