

Office of Environmental Stewardship & Sustainability

[Submit your Newsletter Name Here]

Hey, y'all, we need a new newsletter name and our well of creativity (on this point) has run dry. Please do us a solid and submit ideas to poss@sewanee.edu. If you submit the winning name, we'll send you a gift card to an on-Domain eatery of your choice. Whet your appetite on our dime. And thank you!

Director's Letter



It's starting to feel like fall might be around the corner! To celebrate the semester and the transition from summer to fall, OESS and student orgs, have been hosting events around campus. We have been leading hikes around the Domain; making homemade, farm-fresh bruschetta; toasting s'mores while listening to frog calls at Lake Cheston; tracking migration with the Bird Watching Group; and hosting our first Womxn event - Campfires and Confidence...

[READ MORE](#)

Brucie the Bass

Domain Research - Data collection continues in the stream below what was once the Brushy Lake dam. All pre-dam removal data has been collected and there is now a culvert in place at Brushy Lake. Our gratitude goes to Dr. Evans and his Advanced Conservation Biology class for getting dirty and helping relocate hundreds...

[READ MORE](#)



Ruin to Rubble to Trail

Domain Management - The adage Reduce, Reuse, Recycle has been used a lot over the years. It is rare when a project can tap all three aspects of the sustainability trifecta. Recently, Domain management has been **Reducing** the amount of material headed to the landfill by **Reusing** old construction debris as fill in an abandoned railroad corridor being **Recycled** into a pedestrian and bicycle path...

[READ MORE](#)



Student Leaders

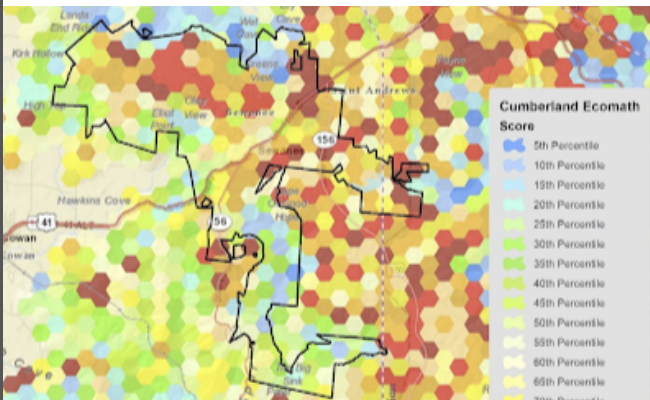
Sustain Sewanee - This fall we welcome three Environmental Residents (ERs) and three Sustain Leaders (SLs). These students have volunteered to be leaders in the sustainability community. Environmental Residents are folk who have committed to personally living a bit lighter on the earth...

[READ MORE](#)

Fall Blooms

The University Farm - Fresh air, distance and sunshine help the University Farm continue to grow it's programs, in spite of Covid-19. Students, professors and visitors all find it easy to maintain a social distance. Professor Deborah McGrath's Agroecology lab students each have their own plot at the farm...

[READ MORE](#)



Fire on the Plateau

Dr Turner's Desk - Fire has always been part of the environment, one of the most important natural agents of change, and it plays an essential role in maintaining fire dependent ecosystems. Domain Management manages the Domain in a number of ways, including through the use of prescribed fire to improve...

[READ MORE](#)

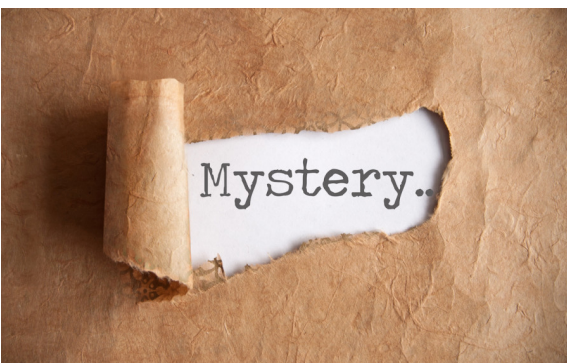
Upcoming



Campfire Building 101

Tue, Sept 22 | 6-9pm

Join Carl Conry, Kevin Fouts, Lillian Fulgham '21 and others at the University Farm - a 15 minute walk from the Quad - on Tuesday evening. They'll be teaching hands-on fire building skills for all who attend.



Who are SoCo?

Thur, Sept 24 | 11-1p

Who are SoCo and what do they do? Drop by to find out between 11-1 near the Spencer Quad. Folks at the tables wish to meet you and fill you in on what they've been up to and what's next.



Intro to Camping

Sat, Sept 26 | TBA

Students Lillian Fulgham and Joseph Brown invite beginners to join them on an SOP camping trip to the Forestry Cabin this weekend. Space is limited. Sign-up sheet is posted outside the SOP door, Bishop's Common.



Mid-Autumn Festival

Fri, Oct 2 | TBA

The students of Asian House, OCCU and SAO enthusiastically invite you to join them in celebrating Mid-Autumn Festival. More details forthcoming.